

# MONTHLY MEMBERSHIP PROGRESS REPORT

LOCATION COLORADO

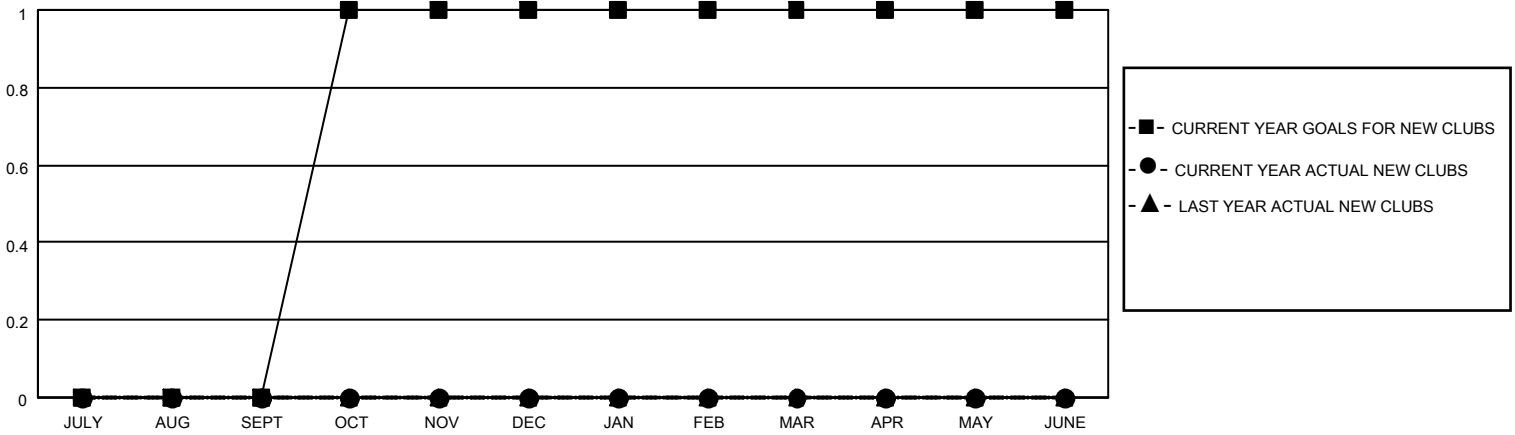
District 6 W

Results as of: 2/28/2023

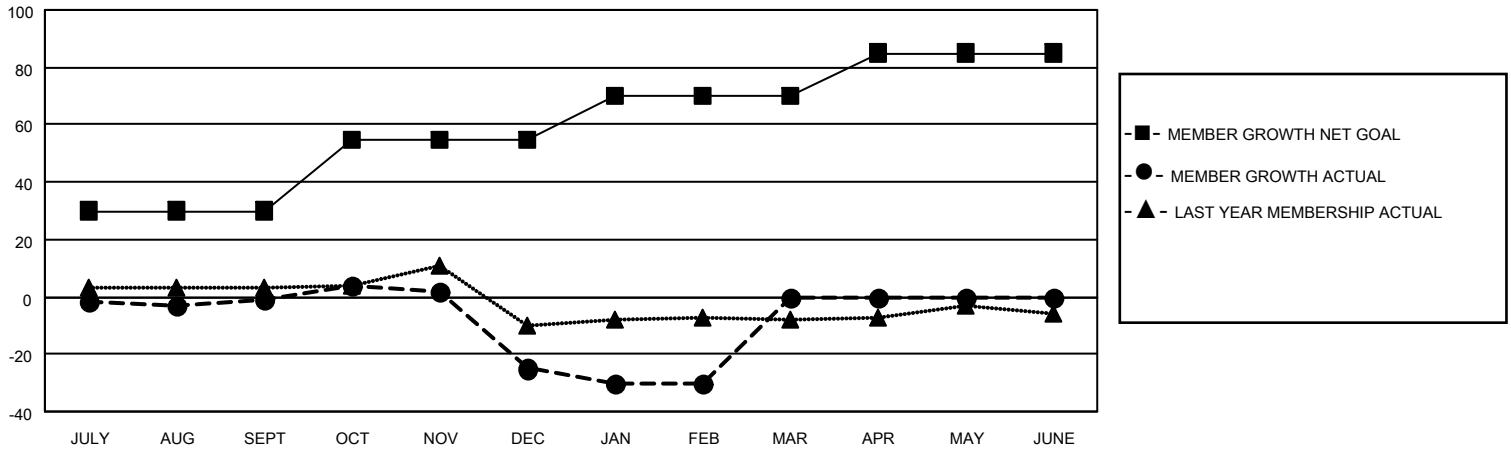
Clubs			
RESULTS FOR 2022-2023			
QUARTER	NEW CLUB GOAL	NEW CLUBS	DROPPED CLUBS
JULY/AUG/SEPT	0	0	0
OCT/NOV/DEC	1	0	0
JAN/FEB/MAR	0	0	0
APR/MAY/JUNE	0	0	0

Members			
RESULTS FOR 2022-2023			
QUARTER	MEMBER GROWTH NET GOAL	MEMBER GROWTH ACTUAL	DROPPED MEMBERS ACTUAL (including transfers)
JULY/AUG/SEPT	30	23	21
OCT/NOV/DEC	25	19	39
JAN/FEB/MAR	15	16	18
APR/MAY/JUNE	15	0	0

**GOALS AND ACTUAL NEW CLUBS CUMULATIVE**



**GOALS AND ACTUAL MEMBERS CUMULATIVE**



**DROPPED CLUBS: 0**

**15 CLUBS OF 28 ADDED 1 OR MORE NEW MEMBERS**

**GENDER DISTRIBUTION**

MALE	418 (60.49%)
FEMALE	273 (39.51%)
NON BINARY	0 (0.00%)
PREFER NOT TO ANSWER	0 (0.00%)

**DROPPED MEMBERS**

[CLICK HERE FOR CUMULATIVE MEMBERSHIP DATA](#)

DECEASED	10
CLUB CANCELLED	0
OTHER	68
<b>TOTAL</b>	<b>78</b>

TOTAL FAMILY UNIT MEMBERS	131
FAMILY MEMBERS PAYING HALF DUES	66